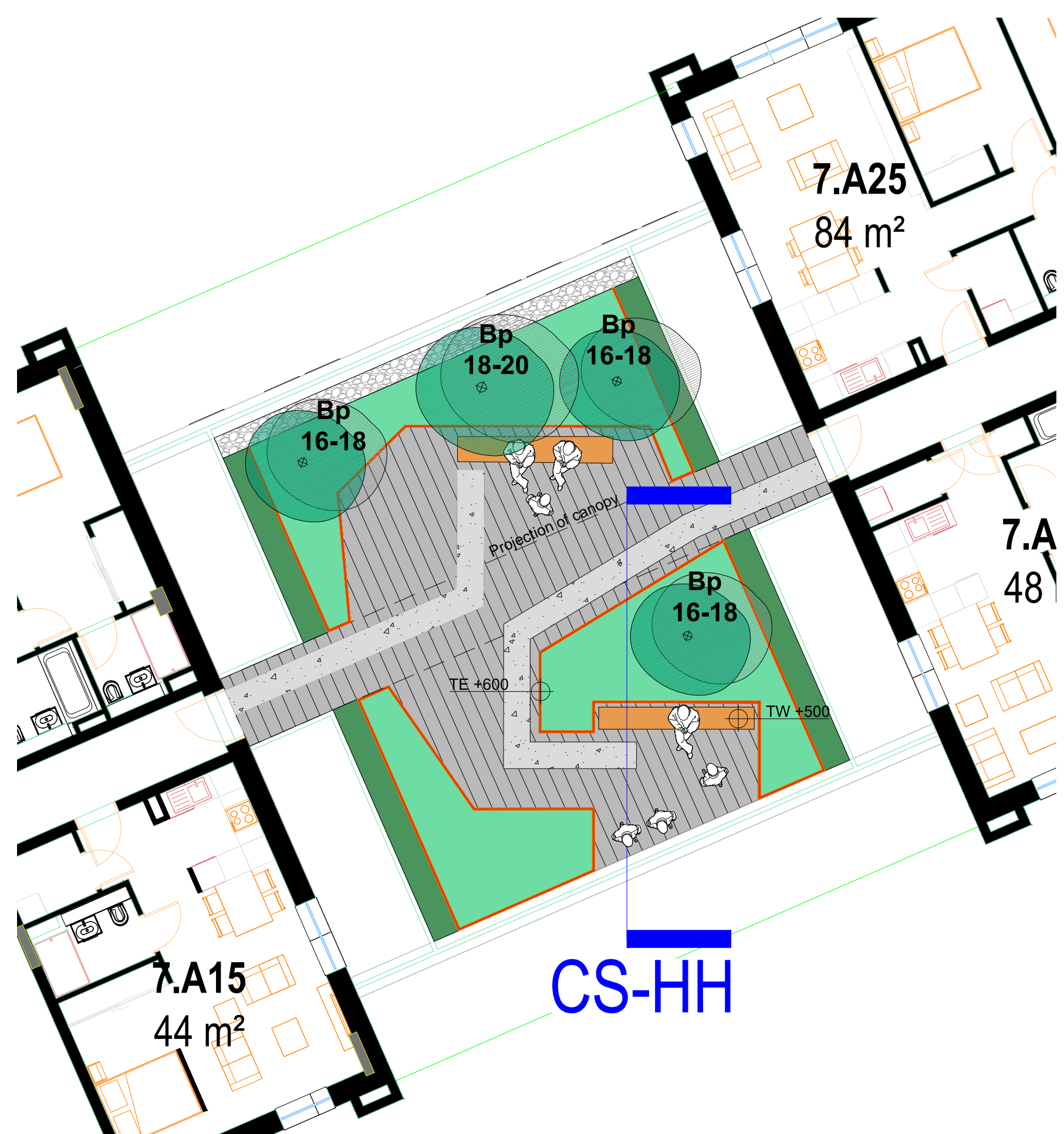
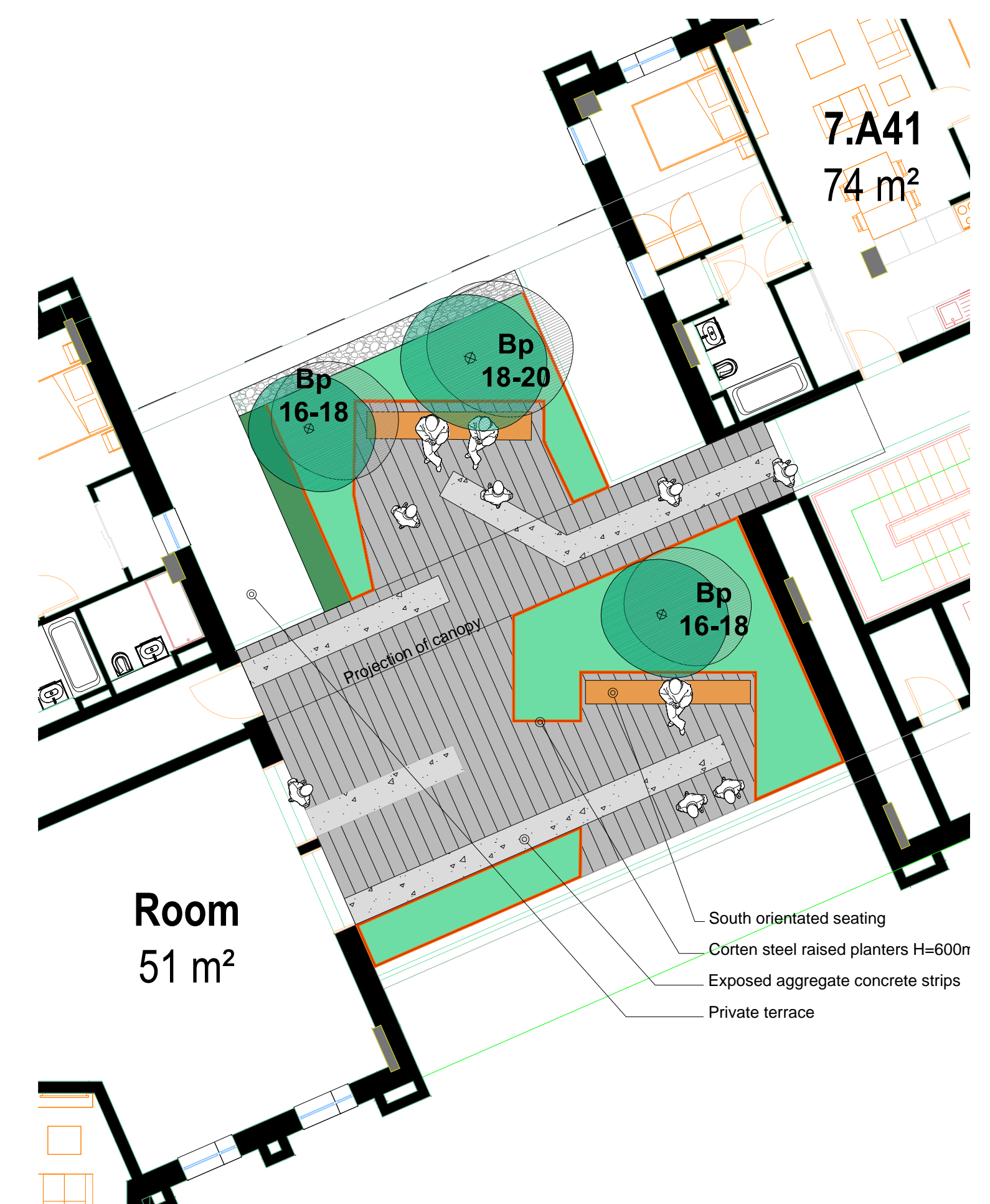




DETAIL 01 - COMMUNAL EXTERNAL SPACE 01  
Scale 1:100



DETAIL 02 - COMMUNAL EXTERNAL SPACE 02  
Scale 1:100



DETAIL 02 - COMMUNAL EXTERNAL SPACE 03  
Scale 1:100

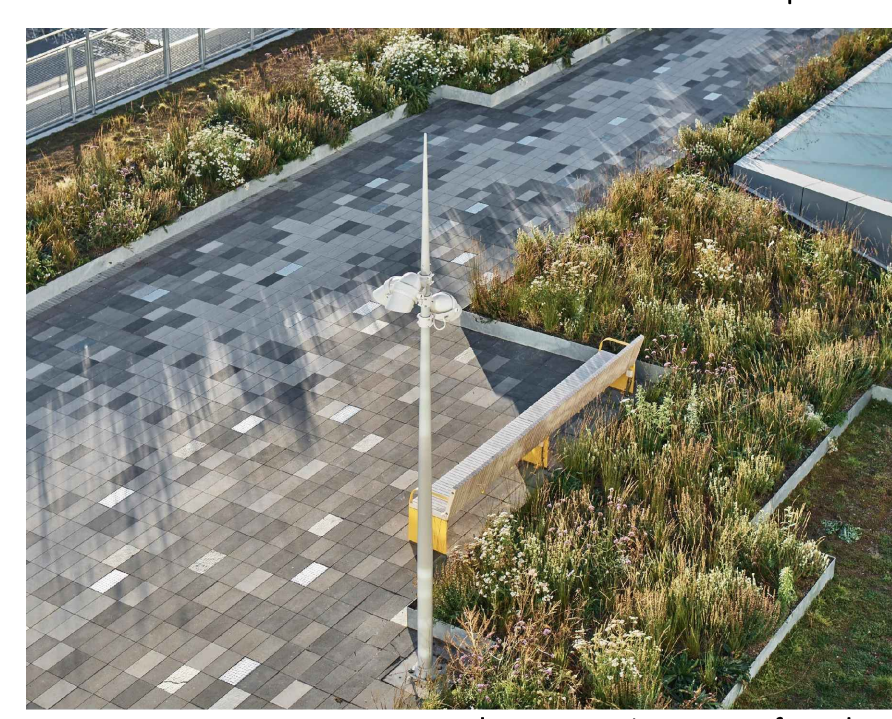
SPECIFICATION KEY	
	<b>Q25/110 - PAVING: NATURAL STONE PAVING</b> <ul style="list-style-type: none"> <li>95x63mm in random length of 200 x 400 x 600 mm flame-textured MID-GREY GRANITE paving.</li> <li>6mm joints to paving units to be filled with wet/slay mix jointing material to BS:7533, colour neutral.</li> <li>Sub-base to engineer's design detail and specification.</li> <li>Apply two coats of clear wet look sealer to prevent staining.</li> </ul>
	<b>Q21115A - PAVING: EXPOSED AGGREGATE CONCRETE SURFACING</b> <ul style="list-style-type: none"> <li>Aggregate: size maximum 10 and 20 rounded river-washed gravel. Additional aggregate requirements: Aggregate size (maximum) 10 mm PCC and 20 mm PCC by Kilaran or EGA; fine aggregate washed sand and CRF dust by Kilaran or EGA.</li> <li>Cement: Cemlink by Irish Cement and 'GGBS' by Ecom or EGA.</li> <li>Admixtures: 'Ada 411 HIRWAC' by Mars VMA by Grace Construction Products &amp; '150-12 Fibremat' by Curtis Enterprises or EGA.</li> <li>Colour: to match trial panel.</li> <li>Additional mix requirements: 'Ferti VBA Bio Z' or EGA vegetable-based surface retarder and curing agent for textured concrete landscaping.</li> <li>Slab thickness: 150 mm C40 concrete with reinforcement to engineer's specification.</li> <li>Finish: Exposed aggregate surfacing.</li> <li>Sub-base: <ul style="list-style-type: none"> <li>Formed joints: at 5 m centres, temporary forms: square edged with a steel top surface, placing concrete: compact thoroughly at edges to give level, closely abutting joints with no topping.</li> <li>Sawed Crack: at min. 3m c/c, not less than one quarter the depth of the slab in depth and as narrow as practicable. Sawing sufficiently early to prevent random cracking (within 24 hours of casting slab) and to produce strong, well defined joints. Groove filling: sealant.</li> </ul> </li> </ul>
	<b>P1 - ORNAMENTAL SHRUBS AND PERENNIALS</b> <ul style="list-style-type: none"> <li>Ayuga reptans, Digitalis grandiflora, Iris foetidissima, Kniphofia 'Alcazar', Libertia grandiflora, Blechnum spicatum, Phyllis (Asplenium) scolopendrium.</li> <li>Planting to 300mm depth BS3882 multi-purpose topsoil on free-draining sub-base, topped with 90gsm² black landscape fabric and 75mm depth medium-grade pine bark mulch.</li> <li>Ornamental perennial planting to comprise flowering perennials &amp; evergreen shrubs to soften the visual impact of the development.</li> </ul>
	<b>PLANTING - HEDGEROW:</b> <ul style="list-style-type: none"> <li>Evergreen Yew (Taxus Baccata) Hedgerow maintained at 1m height to screen low level views or parked vehicles whilst allowing open uninterrupted views of the proposed development.</li> </ul>
	<b>Q31 - CLEAR-STEMMED TO 2M HEIGHT SEMI-MATURE TREES</b> <ul style="list-style-type: none"> <li>Semi-mature trees provided with 1200mm² multi-purpose grade topsoil to BS: 3882, topped with black 90gsm² landscape fabric secured with plastic pegs at 300mm c/c's &amp; 75mm depth medium-grade bark mulch.</li> <li>Trees double-staked &amp; supplied with planting accessories, and provided with root restrictors within 2m of paving, underground services and foundations.</li> </ul>
	<b>Q50/220A - WOODEN BENCH WITH BACKREST</b> <ul style="list-style-type: none"> <li>500mm width x 400mm depth x 3500mm length planned smooth Grade A green Douglas Fir to 500mm height from FGL.</li> <li>Timber to be FSC-certified and sourced sustainably.</li> <li>Base frame of galvanneal mild steel (powder coated to RAL 8004 Copper brown) with stainless steel fasteners, bolted to C20P concrete foundation to engineer's specification, finished 100mm below FGL.</li> <li>Seat and backrest of solid Douglas Fir softwood.</li> <li>Shop drawings to be produced by contractor prior to fabrication.</li> </ul>



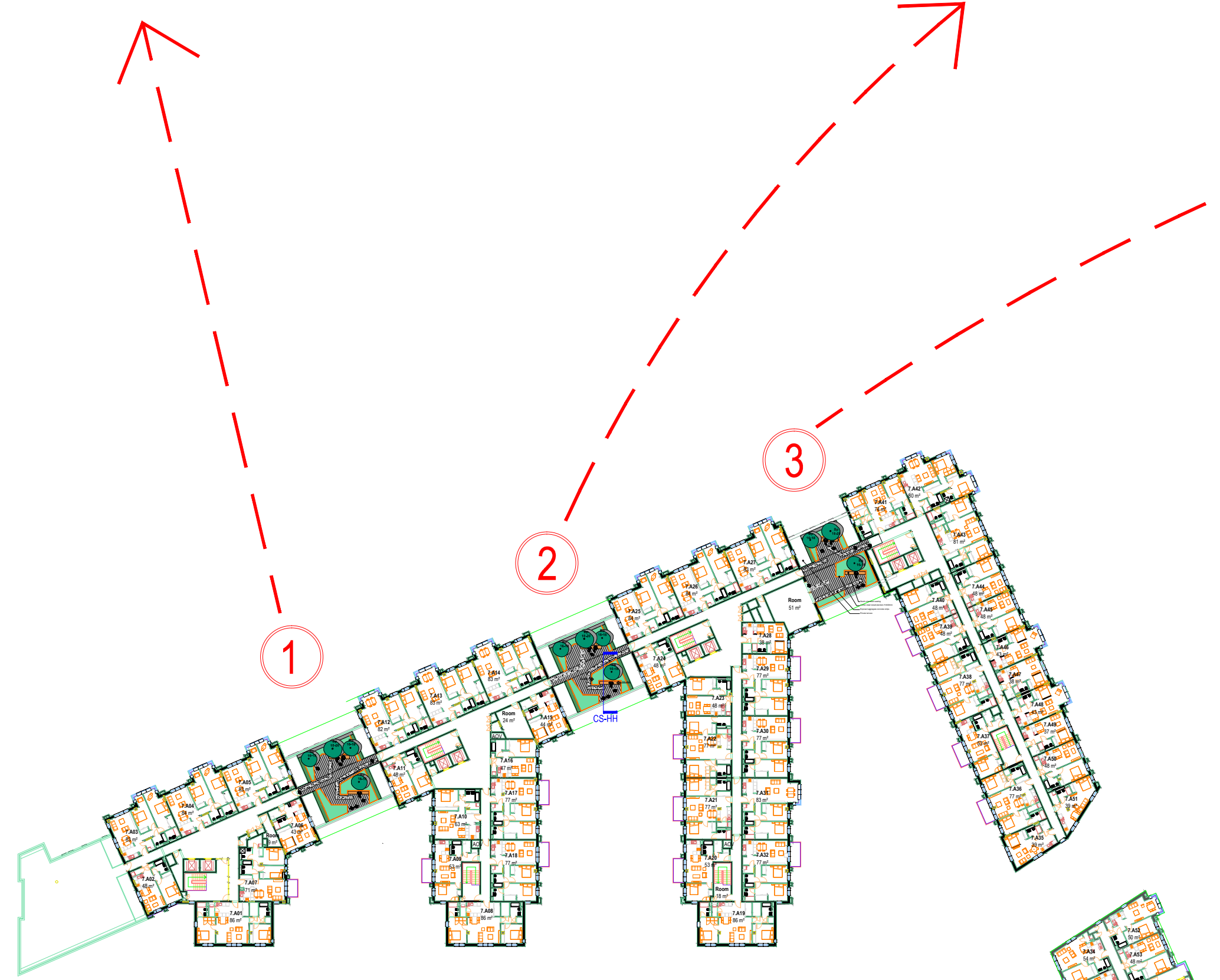
Nectar garden



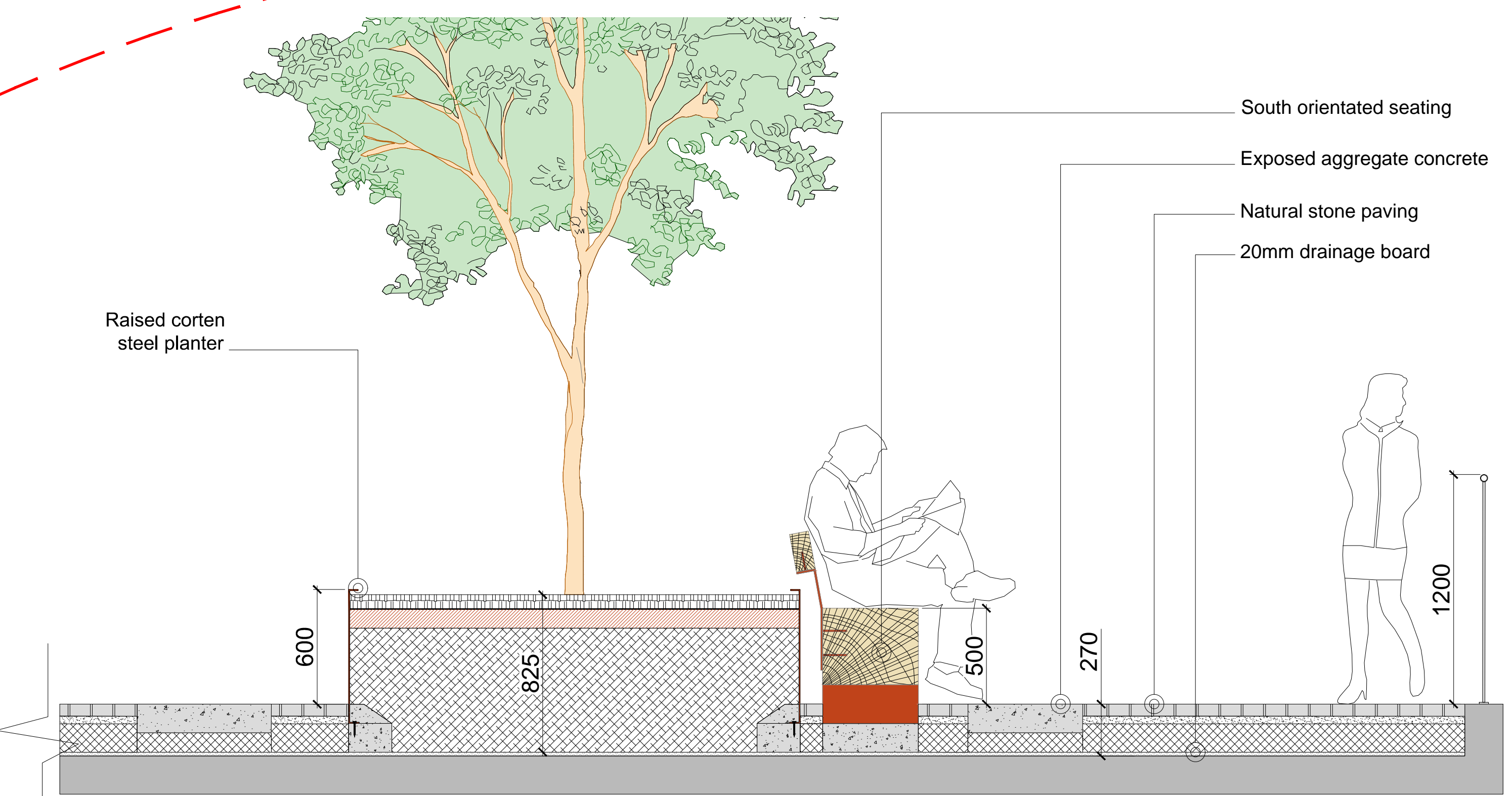
Corten steel raised planter



Natural stone paving on roof garden



ROOF GARDEN - 7th FLOOR  
Not to scale



CONSTRUCTION SECTION HH  
Scale 1:20

- Psp** - Prunus spinosa (Blackthorn)  
**Ps** - Pinus sylvestris (Scots Pine)  
**Bp** - Betula pubescens (Downy Birch)  
**Bpd** - Betula pendula (Silver Birch)  
**Ac** - Acer campestre 'Streetwise' (Field Maple)  
**Al** - Amelanchier lamarckii (Snowberry)
- Level Notes:**  
 EX+ Existing Level  
 TL+ Top of Landscape Finish  
 TP+ Top of Paving  
 TK+ Top of Kerb  
 TW+ Top of Walls  
 TE+ Top of Edging

